

Helping the Heartland

VOLUME 2 ISSUE 4 • MARCH 2005

Fire Response Stretches Resources

Disaster Action Team handles increased number of calls

On the average, Heartland Chapter responds to a disaster case every 36 hours, but during the first two months of the year, Disaster Action Teams provided on-site assistance at nearly twice the normal rate. Across all four counties—Douglas, Sarpy, Cass and Washington—the incidents included 30 single family fires and 12 apartment building or multiple-family fires.

A total of 63 households, affecting 175 people were displaced from their homes and were provided with the immediate basic human

Alice Young, a victim of a house fire in February said she could smell something hot before she knew the house was on fire. Alice was on the phone with her landlord as he was en route to the house. From blocks away, he spotted the smoke coming from the roof and advised Alice to evacuate immediately—the fire was in the ceiling! Major damage left the house uninhabitable and the Red Cross provided Alice with three nights of emergency lodging.

An increase in the numbers of incidents in the winter, as well as the expense associated with providing warm winter outer garments has strained Red Cross coffers. Nearly \$35,000 in direct financial assistance was committed to recovery efforts following the January and February fires.

Salmi urges donors to think about fire victims. “Hurricanes make headlines, but house fires cause pain and suffering, too,” he stressed. “We’ll continue to work with the affected families in the days and weeks ahead, as they plan their long-range recovery. Thanks to all of our local Red Cross donors who make it possible for us to answer the call for help.”



Teddy bears comforted more than 60 youngsters displaced by house fires.

needs including a place to stay, food to eat, necessary medications and health items, clothes to wear, and crisis counseling. Teddy bears offered comfort for the 64 children affected. More than 40 Red Cross volunteers, including daytime Disaster Action Teams deployed from Woodmen of the World, responded to the need for assistance.

Cooking, kids, candles and electrical wiring

Emergency Services Director Mike Salmi said the causes included “all the usual suspects”—unattended or out-of-control cooking fires, kids playing with matches, candles left unattended and old or faulty electrical wiring.



Frank Walters assesses damage at the scene of a house fire.

RED CROSS

summer youth camp

Sign up now!

Volunteers
Needed pg. 3

Military Family
Support pg. 5

Preparedness at
Home pg. 6

World Community
Responds to
Tsunami pg. 8

“Helping the Heartland” is a newsletter from the American Red Cross Heartland Chapter

PHONE:
(402) 343-7700

EDITOR & WRITER:
Rosanne L. Bachman

NEWSLETTER DESIGN:
Leopard Inc.

We welcome your comments and suggestions.

To learn more please visit our Web site at www.redcrossomaha.org



American Red Cross

Together, we can save a life



“There is a Place”

A young man jogs toward the camera and you hear his thoughts. *“I don’t know you, but I will give you my blood.”* A woman in a parking lot looks up from her car long enough for you to hear what she’s thinking. *“I don’t know you, but I will save your child from drowning.”* Realistic images of everyday Americans doing everyday things—riding bikes, doing laundry, taking the trash to the curb, watering the lawn—are momentarily punctuated by simple, direct thoughts. *“I don’t think like you, I don’t speak like you, I don’t celebrate the same holidays as you, but I will help save your life.”*

The new *“There is a Place”* public service campaign celebrates distinctly American ideals: compassion and responsibility for each other, respect for our differences, and the desire to preserve diversity as we unite to help one another. The key message of the campaign is this: *“When you help the American Red Cross, you help America.”*

Americans today want a way to fulfill what they perceive as their responsibility to help others—both globally and locally. The outpouring of generosity in the wake of the December 26 tsunami underscores just how strong this sense of civic duty remains.

“There is a Place” offers the public a home for their willingness to serve and to give. At the Red Cross, you’ll find the tools and the teachers and the training to empower you to do all you can to help those who need it, when they need it.

“There is a place where someone you never knew will stretch out their hand and put it across your shoulders and let you know things will get better.” Lines like that give me shivers. Getting involved with the Red Cross helps build strong communities and strong communities make for a strong nation. When you help the Red Cross, you help America.

—Judy Peschio, Executive Director, Heartland Chapter

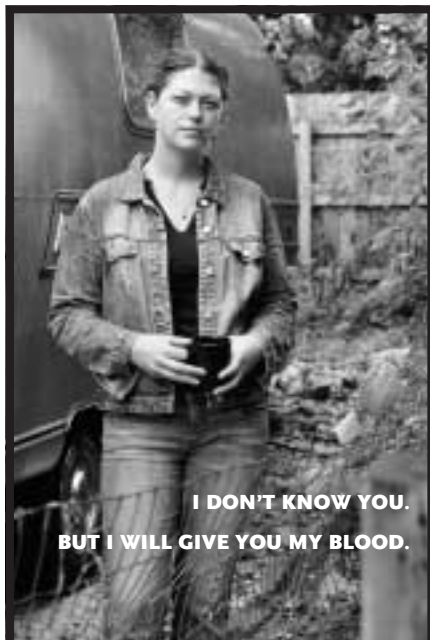
Call for Heroes

Last year, teacher Avis Pittman rushed young children to safety, moments before their classroom ceiling collapsed. Police officers Daniel Placzek, Katie Cooper and Daniel Tanner rescued an accident victim from a burning car. Community activist Frank Peak encouraged hundreds to attend free health screenings.

If you know of a hero, the Heartland Chapter wants to hear from you. Nomination forms for 2005 Heroes are available online, at www.redcrossomaha.org or by calling **343-7771**. The Heroes in the Heartland breakfast will be held **Wednesday, September 21, 2005** at the **Scott Conference Center**. Heroes will be recognized in these 10 categories: Animal, medical, military, youth, senior, workplace, law enforcement, fire/rescue, American Red Cross and community service. The deadline for submitting nominations is **July 1, 2005**.

Volunteer Services

A N D R E C R U I T M E N T



WHEN YOU HELP THE AMERICAN RED CROSS,
YOU HELP AMERICA.

CALL 1-800-GIVE LIFE
OR VISIT US AT GIVELIFE.ORG



Volunteers Needed in Blood Collection, Public Affairs, Youth Programming

The Heartland Chapter is looking for friendly, out-going individuals to fill several volunteer positions

“We are in dire need of blood drive volunteers,” says Karen Saunders. “The Midwest Blood Region continues to schedule additional drives to collect the blood necessary to fill shortages caused by spring flu. Heartland Chapter provides greeters, canteen workers, and drivers for blood drives in the metro area. What more fulfilling volunteer assignment is there than extending a warm welcome to those who choose to donate blood, or thanking them after their donation for possibly saving a life?”

In addition, Heartland Chapter is in need of a “Public Affairs Chair” and several public relations service associates. These positions will work with the Community Affairs Manager as liaison to the media, answering questions at the scene of local disasters such as house fires, explaining the role of the Red Cross. Some experience in writing or working with the media would be ideal but day-long training classes are available.

Heartland Chapter is also recruiting youth volunteers to present “Whales Tales” to children, as well as put on fire safety puppet shows.

Saunders asks current volunteers to search among their family, friends and neighbors to help fill these and other volunteer positions at the Red Cross. For more information, call **343-7775**. “Remember, there is a place for you at the Red Cross... This is the place!” says Saunders.

“Sign Here”

In a directive from the American National Red Cross, all 850-plus Red Cross chapters in the country have been asked to have on file a signed “*Confidential Information and Intellectual Property Agreement for Volunteers*.” This three-page form, in effect, states that Red Cross volunteers will not disclose confidential information to persons outside the Red Cross. Heartland Chapter will make every effort to comply by **June 30, 2005**.

Signing a confidentiality form is not considered unusual today, according to Lanelle McInturf, Director of Human Resources at the chapter. “Red Cross volunteers understand well the importance of confidentiality. Whether they are working with blood donors, disaster victims, or financial donors, both paid and volunteer staff understand and expect that they will be exposed to sensitive situations through their Red Cross work. The form is the legal expression of the trust we’ve been exercising in the community for 89 years,” McInturf explains.

Please visit www.redcrossomaha.org to download, print and sign the 3-page document. You may then bring or mail the signature page to the **Heartland Chapter, 2912 South 80th Avenue, Omaha, NE 68124**. Thank you for helping Heartland Chapter comply with National standards.

Now Two Annual Events in One

88th Annual Awards and Recognition Ceremony & Annual Meeting planned for June

Mark your calendars now to attend the 88th Annual Awards and Recognition Ceremony and Heartland Chapter Annual Meeting Thursday evening, **June 23**, beginning at **5:30 p.m.** at the **Livestock Exchange Building, 4920 South 30th Street** in Omaha. New members of the chapter’s Board of Directors will be elected. More details will be forthcoming.



Disaster

R E S P O N S E

Disaster Services Benefits from New Technology

Advances in web-based technologies are helping Heartland Chapter Disaster Services to deliver services more quickly, efficiently, and effectively. In July 2003, the chapter took a major step forward when it became one of the first in the nation to adopt the Client Assistance Card. These cards allow our clients to shop using a Master Card stored-value debit card, giving them greater flexibility in meeting their immediate emergency needs.



Late last year, the chapter benefited from a \$25,000 William and Ruth Scott Family Foundation Grant and purchased 10 Dell notebook computers, wireless networking equipment, and accessories that now serve as the backbone of the Disaster Operations Center (DOC). Each function will have a computer assigned to it for managing data, reports, e-mail, and exchanging information. In the event the chapter building is unavailable during a disaster, the equipment can easily be moved to another location and DOC operations quickly reestablished.

In January, the chapter “went live” with the Advanced Technology Linking All Services (ATLAS) system. ATLAS replaced outdated systems for training, management, Human Resources, and Disaster Services. The disaster portion (called the Client Assistance System or CAS) allows chapter disaster workers to provide client casework from any Internet capable computer anywhere. This will greatly speed up the delivery of disaster relief financial assistance.

In February, the chapter became one of the first in the Midwest Service Area to become active in the Disaster Services Automated Reporting System (DSARS). Another web-based application, DSARS enables the chapter to work interactively with the Service Area or National Headquarters to exchange disaster information, request resources to fill gaps in our capabilities, make automated daily reports, and submit requests for reimbursement of disaster related expenses.

In March, the Disaster Action Team (DAT) will receive training for using a notebook computer when responding to local disasters. A special cable and software will connect the computer to a cell phone, allowing the DAT to activate Client Assistance Cards in the field. Clients will then be able to begin shopping immediately rather than waiting an hour for the DAT to return to the chapter to activate the cards.

While there are still some paper forms to complete, our goal is to eventually automate almost all disaster services. The Heartland Chapter will continue to be an “early adopter” of these services to more efficiently and effectively meet the needs of our clients.

DAT Stats

January-February

Single Family Fires . . .	30	Households Affected . .	63
Multi-Family Fires . . .	12	People Affected	175
Total	42		

Causes:

Unknown	17	Cooking	4
HVAC	2	Child	5
Faulty Wiring	7	Arson	2
Candles	2	Miscellaneous	3

A Military

FAMILY SUPPORT

Donate Your Old Cell Phone

To help military families stay connected

Nextel Communications, Inc. and Nextel Partners, Inc. collected nearly 80,000 wireless phones and raised nearly \$600,000 last year to benefit the American Red Cross Armed Forces Emergency Services (AFES) program through the DONATE A PHONE program, as well as other fundraising efforts. With more than \$900,000 raised since the campaign's inception in May 2003, Nextel anticipates reaching the \$1 million mark by the program's two-year anniversary this May.

AFES at work

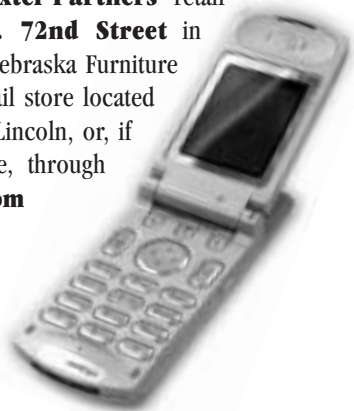
The American Red Cross AFES program provides emergency communication services, assistance and comfort to U.S. military members and their families.

While serving 1.4 million active duty men and women and their immediate family members, the American Red Cross also reaches out to the 1.2 million members of the National Guard, Reserves and their immediate family members who reside in nearly every community in America.

Looking for a few old phones

The DONATE A PHONE program is an easy way to convert old wireless phones lying idle in your home and office into funding for an important service for our military service members and their families. It is estimated that there are 60 million used wireless phones in the U.S.

Used wireless phones and accessories from any manufacturer, can be dropped off at **Nextel Partners'** retail store located at **721 S. 72nd Street** in Omaha across from the Nebraska Furniture Mart and at **Nextel's** retail store located at **6900 "O" Street** in Lincoln, or, if you have a Nextel phone, through www.nextelbuyback.com



439th Returns

The 439th Military Police Liaison Team returned to Fort Omaha January 21, 2005. The team had been deployed since December 10, 2003, stationed in Baghdad. Red Cross welcomed the team home by serving sandwiches, compliments of Little King, and cake, compliments of Bakers. The 12-member team currently has no further orders.



SFC Loren Peterson is welcomed home by wife, Sherie, and 2 year old son, Alex.

"One of my most important coping strategies during Loren's 13-month deployment was using the Red Cross Vidi-Connect program. The hardest part of the separation, for me, was knowing that after waiting so long to enjoy a child, my husband was going to miss seeing our little boy grow during some of his most developmental times. Vidi-Connect let my husband see, and more importantly HEAR, our 'Little Man' sing Happy Birthday and Twinkle Twinkle Little Star! I'm sure his battle buddies were sick of seeing the newest and latest version of our little boy growing up—but it sure made Daddy proud. Our family remains Hoo-AH, and we'll be ready for the next deployment knowing that the Red Cross makes the separation that much easier." **—Sheri Peterson, wife of SFC Loren Peterson**

Preparedness

HEALTH, SAFETY, TRAINING
AND EDUCATION

Together We Prepare for Spring

Director urges preparedness at home

As shoveling snow gives way to mowing grass, thousands of Omahans are venturing back outside to herald the start of spring. Director of Preparedness, Health and Safety Rob Waterhouse says the change in seasons, and the corresponding change in family routines, is a good time to review family preparedness plans.

"Longer daylight hours, more time spent outside, and more after-school activities can all mean a significant change in routine for families. It's the perfect time to discuss with your kids what they should do in the event of an emergency," Waterhouse stresses.

As part of the "Together We Prepare" initiative, Red Cross encourages every individual, family member, business and school to know what to do and where to go in an emergency, whether it is a first aid emergency, or a weather-related incident. "Disasters strike without warning," states Waterhouse. "These events can be frightening for adults, but they are traumatic for children if they don't know what to do. In an emergency, children may become anxious, confused, or frightened. Having a family disaster plan in place can help reduce fear."

con't on page 7

2005 RED CROSS

summer youth camp

FOR AGES 11-14

Prepare to have fun!

Do you like babysitting but lack the certification that tells parents you know what to do in an emergency? Do you like to swim and think life guarding sounds like fun? Are you an animal lover who wants to know how to respond if one of your 4-legged friends needs help?

Here is your chance to meet new friends, learn valuable skills in preparedness, and gain Red Cross certification! Cost is \$325 for one full week of training.



Dates:

June 13-17
July 11-15
July 25-29

Certifications:

- Babysitter's Training
- CPR, First Aid and use of AED
- Jr. Life Guarding
- Pet First Aid

Camp Meets:

Monday-Friday
8 am-4 pm

Mention this ad & receive \$25 off registration fee.

Space is limited • Call now • 343-7730



American
Red Cross

Heartland Chapter
2912 South 80th Ave. • Omaha, NE



Pre-packaged disaster supply kits similar to this one are available online by calling 343-7730.

con't from page 6

Make a plan

Waterhouse recommends that families identify potential disaster scenarios (*especially fires in the home*) and practice what to do if evacuation is needed. Identify an out-of-town person each family member can contact in case of an emergency.

“Even young children should know the basics. Does your child know where the exits are in your home and how and when to call 911, both at home, and at the caregiver’s?”

Build a kit

Having a disaster supplies kit ready to go can make all the difference in how well a family weathers the first few hours after a disaster. The contents should be placed in an easy-to-carry container such as a large backpack, duffel bag or plastic bin. It is important to pack enough water (*one gallon per person per day*), and non-perishable food items, a first aid kit, a flashlight, a radio, extra batteries, and special items such as medications, diapers, or infant formula. Waterhouse says pre-packaged disaster kits can be purchased by calling **343-7730**.

“Parents teach by example,” says Waterhouse. “I don’t think planning for unforeseen disaster frightens children as much as it empowers them. It teaches them about the importance of clean drinking water and non-perishable food in the event of a power outage. It teaches them that by knowing first aid, they may be able to help someone else in an emergency. It’s another way we assure them that we are taking care of them.”

Get trained

Although we can’t control disasters, we can do something about our ability to respond to them. Responsible adults should consider enrolling in life-saving training in first aid, CPR and the use of an automatic external defibrillator. A copy of the Heartland Chapter schedule of classes can be found at www.redcrossomaha.org. “These things may sound simple, but being proactive and actually following through with them now is one way you can improve your chances of enjoying a safe and happy spring!”



Whale of a Deal

The beloved Longfellow the Whale, named after the founder of the Red Cross water safety program, Commodore Wilbert E. Longfellow, has come to life in a new way.

Through a generous donation from the U.S. Bank Foundation, and with the assistance of Fern Spencer, Vice President of Relationship Marketing with U.S. Bank and a member of the Heartland Chapter Board of Directors, the WHALE Tales program now has an inflatable walk-around mascot – Longfellow the Whale.

WHALE Tales is part of Heartland Chapter’s Learn-to-Swim program, which enrolled more than 14,000 children last (fiscal) year. Beginning this spring, Longfellow will make guest appearances at schools, community organizations and area swimming pools. Volunteers are needed to play the part of Longfellow. Please contact Rob Waterhouse, **343-7734**, or Karen Saunders **343-7275** for more information.

World Community Responds to Tsunami

Red Cross/Red Crescent Societies Around the Globe Raise \$1.2 Billion

On December 26, 2004, a deadly tsunami roared ashore in south Asia and east Africa, creating immense, unprecedented humanitarian needs. The International Federation of Red Cross and Red Crescent Societies launched the largest emergency relief operation in their history. Within 30 days, these organizations raised more than \$1.2 billion to deliver immediate lifesaving aid to survivors and help rebuild devastated families and communities.



Red Cross/Red Crescent workers respond to the overwhelming call to help tsunami victims.

The threat of disease is significant, and the American Red Cross will work in partnership with organizations like UNICEF and the World Health Organization in a massive measles immunization and health intervention campaign for 22 million children in affected countries.



Initial American Red Cross relief efforts focused on getting lifesaving aid into the hands of survivors by distributing emergency food, safe drinking water, tents and tarps for shelter, mosquito nets for protection from mosquito-borne disease, kitchen sets, family hygiene kits and much more.

The American Red Cross witnessed one of the greatest demonstrations of compassion and support in its 124-year history as Americans walked, mailed and phoned in donations, or donated over the secure internet site. As of February 22, the American public, along with several corporate and philanthropic supporters, had pledged more than \$378.8 million to support tsunami relief. As of this writing, more than \$308 million has been received. In Omaha, the Heartland Chapter received more than \$1 million.

The American Red Cross, in partnership with societies around the world, continues to provide aid to south Asia and east Africa. The International Federation of Red Cross and Red Crescent Societies has announced that money pledged is sufficient to meet the costs of the entire Red Cross/Red Crescent relief program. Following the Federation's lead, the American Red Cross announced that current contributions and pledges, when received, will be sufficient to carry out its immediate and longer-term plans to assist tsunami survivors.



The American Red Cross two-phased assistance plan calls for specialized relief immediately and over the longer term in these 5 areas:

- Food and safe water
- Healthcare and disease prevention
- Immediate family supplies
- Mental health counseling
- Disaster preparedness and prevention measures

For continuous updates about Red Cross tsunami relief efforts, visit www.redcross.org

American Red Cross disaster relief experts departed for Sri Lanka, Maldives and Indonesia to assist with rehabilitating water and sanitation systems, conduct family linking and reunification, coordinate relief supply distributions and provide psychosocial training for local disaster relief workers, family counselors and school teachers.



In Galle, Sri Lanka, residents of two camps carry cooking supplies, water containers and hygiene kits distributed by American and Sri Lanka Red Cross workers.



Memorials

H O N O R A R I U M S

Given in Honor of

Bob Bates, Sandy Callahan & their colleagues at Jefferson Pilot
Selective Insurance

Jacob Beresh
Mr. & Mrs. Gary S. Beresh

Fran & Louis Blumkin
Mr. & Mrs. John T. Whitney

Louie Blumkin
Mrs. B's Office Staff

Stan & Judy Bowker
Mr. & Mrs. Clayton K. Bowker

Ann Brown
Mrs. Patricia B. Strehl

Donald Dunn
Mrs. Thelma G. Dunn-Howard

Ellen Freeman
Anonymous

Joanne & Melvin Freeman
Anonymous

Mrs. Muriel French
Mr. & Mrs. V. Fletcher Nipper

Tim J. Jasa
Ms. Helen F. Jasa

Jesus Christ
Mr. & Mrs. Norris W. Stolp

Sandy Kyle, RN
Mrs. Mari Alice Christensen

Dr. Robert Meyerson & Margo Dover
Ms. Kathleen V. Meyerson

Dr. Moshman
Mr. & Mrs. John T. Whitney

Multi-Option Systems, Inc.
(clients & business partners)
Mr. & Mrs. Donald P. Carpino

Judy Peschio
Ms. Jean Ann Ballinger & Mr. Ward Peters

Tom & Ann Pratt
John Markel Ford-BMW

Russ & Jetty Rabeler
Mr. & Mrs. Kurt Jurgens

Ray Somberg
Ms. Kara L. Brosnihan
Mr. Tim Donnelly
Ms. Marlene Hansen
Mr. Robert I. Kully
Mr. Mark Lippett
Ms. Jacqueline K. Lorince
Mr. Robert P. Musil
Mrs. Leslie M. Peterson
Dian Rumsey
Mr. W. John Seigel
Mrs. Cary Sharkey
Mr. David L. Weber
Mr. & Mrs. Daniel L. Wicht

Patricia Strehl
Ms. Ann Brown

Meg Tigges, RN
Mrs. Mari Alice Christensen

Tsunami Earthquake Victims
Mrs. Carol A. Bryant

Lt. Col. Randall G. White
DFAS-OM NCO Council

Given in Loving Memory of

Elaine Adams
Mr. & Mrs. Richard L. Goshorn

Evelyn Anderson
Ms. Elaine Hanson

Roger Anderson
Dr. & Mrs. George Allison

Vernon Bertelsen
Mr. & Mrs. George H. Lauritsen

Anna Boettger
Mr. & Mrs. Gerald Allen

Mr. Ralph Barbe
Mr. & Mrs. Dennis D. Dau & Family

Mrs. Elaine Fietsam
Mrs. Karen Hansen

Mrs. Alice Hollins
Kim Huff

Mr. & Mrs. Max Kurz
Ms. Bev Layten

Mr. & Mrs. Dale Meisinger
Mr. & Mrs. Ed Ohm

Mr. & Mrs. Dave Otte
Mr. & Mrs. Delbert Otte

Ms. Doris Otte
Mr. & Mrs. Rollie Otte

Mr. & Mrs. Mervin Otte
Ms. Dee E. Otte & Family

Mr. & Mrs. Stanley Otte
Mrs. Joyce A. Peterson

Mr. Erling Place
Mr. & Mrs. Carl D. Puls

Mr. & Mrs. John Robertson
Mr. & Mrs. Will Salz

Cathy & Roger Schubert
Mr. & Mrs. Dave Smith

Mrs. Calvin H. Sorensen
Mr. & Mrs. Mike Wofford

Kenneth Burton
Jerry & Betty Golmanavich

Melonie A. Carlson
Mr. & Mrs. Vaughn L. Carlson

Lorena Chambers
Ms. Shirley J. Drey

Audrey Cohen
Indian Hills Villas Association

Corrine Conrad
Mr. & Mrs. Robert J. Dargy

Dottie Eisele
Dr. Lynn & Dr. Thom McCurdy

A Friend
Ms. Eunice A. McKain

Eddie Fuxa
Ms. Monica H. DeWulf

Deceased Members of Giardina & Siracuse Family

Mr. & Mrs. Joseph L. Siracuse

William Hays
Mrs. Sylvia I. Kielian

Bill Hinchcliff
Judy & Tom Peschio

Dora Hodges
Mr. & Mrs. Len A. Pacer

Eric Huff
Mr. & Mrs. Douglas A. Kozisek

Indonesian Disaster Victims
Mr. & Mrs. Wally Polak

Panikos Ioannoy
Mr. & Mrs. Byron T. Aftonomos

Angela Issler
97th Intelligence Squadron

Neil B. Johnson
Mrs. Neil B. Johnson

Mabel (Mae) Lazer
Lorena Balderson

Dr. & Mrs. James Dube
Ms. Aloha F. Hendrickson

Mr. & Mrs. Edward H. Zieg
Ms. Judy Bellizzi

Sean Lynch
Mr. & Mrs. Paul F. Lynch, Jr.

Bessie Menousek
Ms. Dorothy Menousek

Ms. Maritsa Mitsingas
Mr. & Mrs. Byron T. Aftonomos

Connie Kersten O'Gara
Dr. & Mrs. William J. Mohr, III

Maurice Patton
Mrs. Esther O. Roose

Sally Potter
Ms. Irene A. Hall

Rob Reeser
Ms. Clo Ann Shirley

Pauline (Polly) Rison
Mrs. Susan A. Gilfry

Your Friends at Industrial Label Corporation
Mr. & Mrs. Dennis J. Balkus

Ms. Bonnie J. Blanke
Ms. Linda L. Boles

Ms. Marcy Boyer
Ms. Lori A. Cheshier

Ms. Bernadine Culver
Mr. Brian S. Hansen

Ms. Linda J. Heedum
Ms. Amy J. Hennen

Ms. Shirley J. Henson
Ms. Susan V. Hicks

Ms. Ann Johnston
Ms. Rosalie A. McGinnis

Ms. Sharon K. Olson
Ms. Virginia M. Skinner

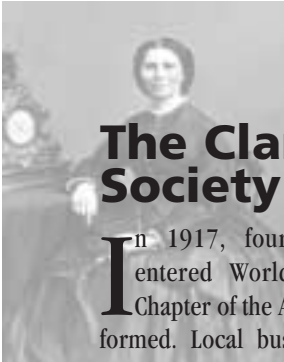
Mr. & Mrs. Norman L. Thonen

Ann Rosenblatt
Mr. & Mrs. Eddie H. Bailen

con't on page 11

Thanks

TO OUR FRIENDS
& NEIGHBORS



The Clara Barton Society

In 1917, four days after America entered World War I, the Omaha Chapter of the American Red Cross was formed. Local businessman Gould Dietz served as Chapter Chair, organizing chapter services and conducting fundraising drives for members. Over the next 88 years, significant financial contributions by a number of individuals would provide the resources necessary to build the American Red Cross Heartland Chapter into one of the area's most effective and



respected humanitarian organizations.

In the future, these individuals will be recognized as members of the Clara Barton Giving Society. Members of the society will be recognized as those who strive to guarantee that American Red Cross services will continue in this community for many generations to come.

At the November 2004 "Where Cause Meets Commitment" luncheon, Red Cross volunteer and past board chair Todd Foje launched the start of the society with the announcement of its first gift—\$50,000—from longtime supporters Harold and Marian Andersen. The Andersens will donate \$10,000 a year for 5 years. Multi-year donations of \$5,000 a year for five years, and \$1,000 a year for five years also qualify benefactors for membership.

For more information about becoming a charter member of the Clara Barton Giving Society, please contact Development Director Jim Brown, 343-7761.

Gone...but Not Forgotten

It's only natural to want our lives to continue to count for something after we are gone. One of the reasons parents and grandparents seek to instill values into their children and grandchildren is so their influence will stretch into the future through family members to help shape the world in which they will live

With 88 years behind us, the American Red Cross Heartland Chapter is preparing for a future in which we'll be around for many more years to come, providing relief to victims of disaster and helping people prevent, prepare for, and respond to emergencies and keeping our community healthy and safe.

One of the ways in which our friends and supporters have chosen to help assure that the Red Cross will continue to be there for future generations is to include the Heartland Chapter of the American Red Cross in their wills or other estate plans. By doing so you are helping to assure that the vital programs and services of the Red Cross will continue past your lifetime. And although the people we'll help in the future may never be able to thank you, they will be a living tribute to your generosity

To learn more about how you can include the Heartland Chapter in your will or other estate plans, please contact Jim Brown, Development Director at (402) 343-7761, or e-mail him at brownji@usa.redcross.org.

cont from page 10

Given in Loving Memory of

Elizabeth Schneider
Mr. & Mrs. David P. Brown
Mr. & Mrs. Allen F. Brown
CSM & Mrs. James D. Goeltz
Mr. & Mrs. John L. Daly

Elmer & Elizabeth Schneider
Mrs. Mary Ann Brown

Don Sharp
Mrs. Kristine Protzman

Catherine Smola
Mr. & Mrs. Robert J. Dargy

South Asia Tsunami Victims
Ms. Kathleen Alessandro
Quad Club

Lois Stevens
Mrs. Patricia B. Strehl

Corene Swatek
Mr. George F. Swatek

Frances L. Tritten
Mutual of Omaha Insurance Co.
Ms. Julie M. Gelbman
Mrs. Sue Harkness
Ms. Jane Manczuk

James A. Walther
Mrs. James A. Walther

Fay Webb
Mrs. Jeannette D. Webb

Frank Wraight
Mr. and Mrs. Ralph M. Katz

Bernice Ziegman
Chuck and Mary Lou Boetel
Ms. Jane Gallagher
Mrs. Carmen F. Grasso
Mr. and Mrs. Clarence Matya
Mr. Ed Sedlacek
Mrs. Pat Teal
Mr. and Mrs. G. Thomas Wagner



Board of Directors

OFFICERS

Edwin A. Willis
Chairman

Todd A. Foje
Vice Chairman

Elias Eliopoulos
Secretary

Tim Burke
Treasurer

Scott S. Moore
Human Resources Chairman

BOARD OF DIRECTORS

Gary Bren
James Bridges
Eric Butler
Sandra Callahan
Ann M. Cannon
Chief Robert Dahlquist
Michael Delich
Viv Ewing
John Fraser
Wayne Graham
Greg Johnson
Michael D. Karstens
Donna Kush

Daniel P. Martin
Jim McKernan
Rochelle Mullen
Dennis Murphy
Steve Nogg
Jennifer Gentle Oumarou
David Roe
Carol Russell
Fern Spencer
Diane Stormberg
Leon Thomas
Kurt F. Tjaden
Dave Ward
Ellen Wright

HONORARY MEMBERS

Marian Andersen
William E. Conley
Paul C. Jessen
William H. Johnson
Peter Lahti

SERVICE HONOR

Kathryn (Kay) Tukey

EXECUTIVE DIRECTOR

Judith A. Peschio

Crossing Paths 2005

Thousands of people in our community cross paths with the Red Cross every day, through blood services, emergency and disaster services, health and safety education, volunteer training, and programs that support the military. To learn more about the programs and services of the Heartland Chapter, register to attend a free, one-hour information program on any of the following dates.

Call 343-7771 for information.

April 13 10:00 a.m.
May 4 4:00 p.m.
June 1 10:00 a.m.
July 13 4:00 p.m.

August 3 5:30 p.m.
September 7 ... 10:00 a.m.
October 5 4:00 p.m.

American Red Cross

Heartland Chapter
2912 So. 80th Ave.
Omaha, NE 68124
www.redcrossomaha.org

Non-Profit Org.
U.S. Postage
PAID
Permit No.
1774

ADDRESS SERVICE REQUESTED